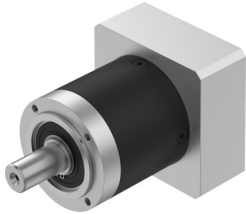


Gear unit EMGA-80-P-G12-SAS-100

Part number: 8141751

FESTO



 [General operating condition](#)

Data sheet

Feature	Value
Gearbox flange size	80 mm
Motor flange size	100 mm
Torsional backlash	0.15 deg
Gearbox type	Planetary gear
Gear ratio	12:1
Max. actuator speed	7000 rpm
Gearbox operating temperature	-25 °C ... 90 °C
LABS (PWIS) conformity	VDMA24364-B2-L
Degree of protection	IP54
Continuous output torque	120 Nm
Mass moment of inertia, gearbox	0.589 kgcm ²
Max. output torque	192 Nm
Max. efficiency	96 %
Torsional rigidity	10.2 Nm/arcmin
Product weight	2800 g
Permissible axial shaft load	1000 N
Permissible radial shaft load	750 N
Gearbox interface, output shaft	80G
Gearbox interface, actuator	100A
Note on materials	RoHS-compliant