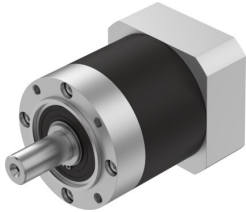


Gear unit EMGA-120-P-G12-SAS-100

Part number: 8141754

FESTO



 [General operating condition](#)

Data sheet

| Feature | Value |
|---------------------------------|-------------------------|
| Gearbox flange size | 120 mm |
| Motor flange size | 100 mm |
| Torsional backlash | 0.15 deg |
| Gearbox type | Planetary gear |
| Gear ratio | 12:1 |
| Max. actuator speed | 6500 rpm |
| Gearbox operating temperature | -25 °C ... 90 °C |
| LABS (PWIS) conformity | VDMA24364-B2-L |
| Degree of protection | IP54 |
| Continuous output torque | 260 Nm |
| Mass moment of inertia, gearbox | 2.224 kgcm ² |
| Max. output torque | 416 Nm |
| Max. efficiency | 96 % |
| Torsional rigidity | 22 Nm/arcmin |
| Product weight | 8000 g |
| Permissible axial shaft load | 2500 N |
| Permissible radial shaft load | 1750 N |
| Gearbox interface, output shaft | 120G |
| Gearbox interface, actuator | 100A |
| Note on materials | RoHS-compliant |