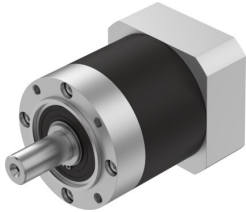


Gear unit EMGA-120-P-G20-SAS-100

Part number: 8141755

FESTO



 [General operating condition](#)

Data sheet

Feature	Value
Gearbox flange size	120 mm
Motor flange size	100 mm
Torsional backlash	0.15 deg
Gearbox type	Planetary gear
Gear ratio	20:1
Max. actuator speed	6500 rpm
Gearbox operating temperature	-25 °C ... 90 °C
LABS (PWIS) conformity	VDMA24364-B2-L
Degree of protection	IP54
Continuous output torque	260 Nm
Mass moment of inertia, gearbox	1.573 kgcm ²
Max. output torque	416 Nm
Max. efficiency	96 %
Torsional rigidity	22 Nm/arcmin
Product weight	8000 g
Permissible axial shaft load	2500 N
Permissible radial shaft load	1750 N
Gearbox interface, output shaft	120G
Gearbox interface, actuator	100A
Note on materials	RoHS-compliant