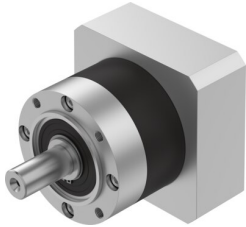


Gear unit EMGA-120-P-G8-SAS-140

Part number: 8141759

FESTO



 [General operating condition](#)

Data sheet

Feature	Value
Gearbox flange size	120 mm
Motor flange size	140 mm
Torsional backlash	0.12 deg
Gearbox type	Planetary gear
Gear ratio	8:1
Max. actuator speed	6500 rpm
Gearbox operating temperature	-25 °C ... 90 °C
LABS (PWIS) conformity	VDMA24364-B2-L
Degree of protection	IP54
Continuous output torque	120 Nm
Mass moment of inertia, gearbox	1.431 kgcm ²
Max. output torque	380 Nm
Max. efficiency	97 %
Torsional rigidity	18 Nm/arcmin
Product weight	7000 g
Gearbox interface, output shaft	120G
Gearbox interface, actuator	140A
Note on materials	RoHS-compliant