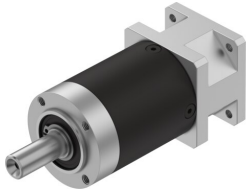


Gear unit EMGA-40-P-G12-SST-42

Part number: 8141763

FESTO



 [General operating condition](#)

Data sheet

Feature	Value
Gearbox flange size	40 mm
Motor flange size	42 mm
Torsional backlash	0.31 deg
Gearbox type	Planetary gear set
Gear ratio	12:1
Max. actuator speed	18000 rpm
Gearbox operating temperature	-25 °C ... 90 °C
LABS (PWIS) conformity	VDMA24364-B2-L
Degree of protection	IP54
Continuous output torque	20 Nm
Mass moment of inertia, gearbox	0.026 kgcm ²
Max. output torque	32 Nm
Max. efficiency	96 %
Torsional rigidity	1 Nm/arcmin
Product weight	450 g
Gearbox interface, output shaft	40G
Gearbox interface, actuator	42A
Note on materials	RoHS compliant