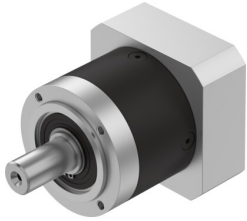


Gear unit EMGA-80-P-G8-SST-87

Part number: 8141766

FESTO



 [General operating condition](#)

Data sheet

Feature	Value
Gearbox flange size	80 mm
Motor flange size	87 mm
Torsional backlash	0.12 deg
Gearbox type	Planetary gear
Gear ratio	8:1
Max. actuator speed	7000 rpm
Gearbox operating temperature	-25 °C ... 90 °C
LABS (PWIS) conformity	VDMA24364-B2-L
Degree of protection	IP54
Continuous output torque	50 Nm
Mass moment of inertia, gearbox	0.37 kgcm ²
Max. output torque	80 Nm
Max. efficiency	97 %
Torsional rigidity	8.4 Nm/arcmin
Product weight	2100 g
Permissible axial shaft load	1000 N
Permissible radial shaft load	750 N
Gearbox interface, output shaft	80G
Gearbox interface, actuator	87A
Note on materials	RoHS-compliant