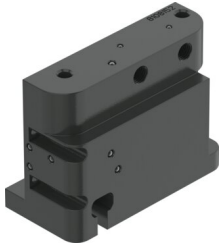


Manifold block CAPS-M1-VDE2-S-A-AL-G14-V

Part number: 8154589

FESTO



 [General operating condition](#)

Data sheet

Feature	Value
Dimensions W x L x H	80 mm x 104 mm x 50 mm
Mode of operation	Single-acting
Design features	Safety pneumatic output 2 exhausted
Normal nominal flow rate (normalized to DIN 1343)	320 l/min
LABS (PWIS) conformity	VDMA24364 zone III
Product weight	650 g
Type of mounting	to VDI/VDE 3847-2
Pneumatic connection	G1/4
Note on materials	RoHS-compliant
Material of screws	High-alloy stainless steel
Housing material	Aluminum, powder-coated