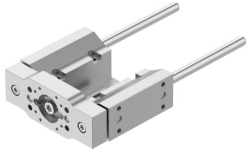


# Guide unit EAGF-P2-KF-45-100

Part number: 8158123

FESTO



 General operating condition

## Data sheet

Feature	Value
Size	45
Stroke	100 mm
Reversing backlash	0 µm
Mounting position	Any
Guide	Recirculating ball bearing guide
Structural design	Guide
Max. acceleration	25 m/s <sup>2</sup>
Max. speed	1 m/s
Corrosion resistance class (CRC)	0 - No corrosion stress
LABS (PWIS) conformity	VDMA24364 zone III
Degree of protection	IP40
Ambient temperature	0 °C ... 60 °C
Max. force F <sub>y</sub>	320 N
Max. force F <sub>y</sub> static	415 N
Max. force F <sub>z</sub>	320 N
Max. force F <sub>z</sub> static	415 N
Max. torque M <sub>x</sub>	15 Nm
Max. static moment M <sub>x</sub>	19 Nm
Max. torque M <sub>y</sub>	10 Nm
Max. static moment M <sub>y</sub>	12 Nm
Max. torque M <sub>z</sub>	10 Nm
Max. static moment M <sub>z</sub>	12 Nm
Displacement force	2 N
Moving mass at 0 mm stroke	342 g
Basic weight with 0 mm stroke	1037 g
Additional weight per 10 mm stroke	12.3 g
Additional moving mass per 10 mm stroke	12.3 g
Center of gravity of moving mass with 0 mm stroke	25 mm
Center of gravity of moving mass with 10 mm stroke	4.3 mm
Type of mounting	With internal thread
Note on materials	RoHS-compliant
Material of guide component	Tempered steel Hard-chrome-plated
Housing material	Anodized
Material of yoke plate	Wrought aluminum alloy Anodized