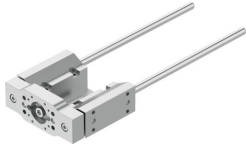


# Guide unit EAGF-P2-KF-45-200

Part number: 8158127

FESTO



 General operating condition

## Data sheet

| Feature  | Value                                |
|--|--------------------------------------|
| Size   | 45                                   |
| Stroke   | 200 mm                               |
| Reversing backlash                                 | 0 µm                                 |
| Mounting position                                  | Any                                  |
| Guide  | Recirculating ball bearing guide     |
| Structural design                                  | Guide                                |
| Max. acceleration                                  | 25 m/s <sup>2</sup>                  |
| Max. speed   | 1 m/s                                |
| Corrosion resistance class (CRC)                   | 0 - No corrosion stress              |
| LABS (PWIS) conformity                             | VDMA24364 zone III                   |
| Degree of protection                               | IP40                                 |
| Ambient temperature                                | 0 °C ... 60 °C                       |
| Max. force F <sub>y</sub>                          | 320 N                                |
| Max. force F <sub>y</sub> static                   | 415 N                                |
| Max. force F <sub>z</sub>                          | 320 N                                |
| Max. force F <sub>z</sub> static                   | 415 N                                |
| Max. torque M <sub>x</sub>                         | 15 Nm                                |
| Max. static moment M <sub>x</sub>                  | 19 Nm                                |
| Max. torque M <sub>y</sub>                         | 10 Nm                                |
| Max. static moment M <sub>y</sub>                  | 12 Nm                                |
| Max. torque M <sub>z</sub>                         | 10 Nm                                |
| Max. static moment M <sub>z</sub>                  | 12 Nm                                |
| Displacement force                                 | 2 N                                  |
| Moving mass at 0 mm stroke                         | 342 g                                |
| Basic weight with 0 mm stroke                      | 1037 g                               |
| Additional weight per 10 mm stroke                 | 12.3 g                               |
| Additional moving mass per 10 mm stroke            | 12.3 g                               |
| Center of gravity of moving mass with 0 mm stroke  | 25 mm                                |
| Center of gravity of moving mass with 10 mm stroke | 4.3 mm                               |
| Type of mounting                                   | With internal thread                 |
| Note on materials                                  | RoHS-compliant                       |
| Material of guide component                        | Tempered steel<br>Hard-chrome-plated |
| Housing material                                   | Anodized                             |
| Material of yoke plate                             | Wrought aluminum alloy<br>Anodized   |