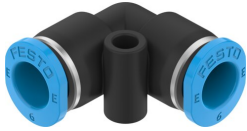


Push-in L-connector NPQE-L-Q6-E-F1A-P10

Part number: 8158797

FESTO



 General operating condition

Data sheet

Feature	Value
Size	Mini
Nominal width	4 mm
Mounting position	Any
Design	L-shape
Pack size	10
Structural design	Push-pull principle
Variants	Metals with copper, zinc or nickel by mass as main constituent are excluded from use. Exceptions are nickel in steel, chemically nickel-plated surfaces, printed circuit boards, cables, electrical plug connectors and coils.
Operating pressure for entire temperature range	-0.095 MPa ... 0.8 MPa
Operating pressure for entire temperature range	-0.95 bar ... 8 bar
Operating pressure for entire temperature range	-13.775 psi ... 116 psi
Operating medium	Compressed air as per ISO 8573-1:2010 [7:4:4]
Information on operating and pilot media	Operation with oil lubrication possible
Corrosion resistance class (CRC)	1 - Low corrosion stress
LABS (PWIS) conformity	VDMA24364 zone III
Suitability for the production of Li-ion batteries	Suitable for battery production with reduced Cu/Zn/Ni values (F1a)
Cleanroom suitability, measured according to ISO 14644-14	Class 4 according to ISO 14644-1
Ambient temperature	-5 °C ... 60 °C
Product weight	2.34 g
Pneumatic connection 1	For pneumatic tubing outside diameter 6 mm
Pneumatic connection 2	for pneumatic tubing outside diameter 6 mm
Releasing ring color	Blue
Note on materials	RoHS-compliant
Housing material	PBT
Releasing ring material	POM
Material of tubing seal	NBR
Material of tube retaining claw	High-alloy stainless steel