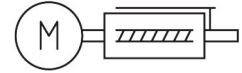
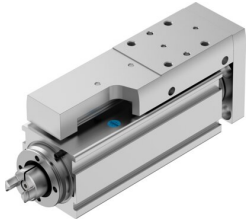


Mini slide EGSC-BS-KF-25-25-2P

Part number: 8162069

FESTO



 [General operating condition](#)

Data sheet

Feature	Value
Working stroke	25 mm
Size	25
Stroke reserve	0 mm
Reversing backlash	150 µm
Screw diameter	6 mm
Spindle pitch	2 mm/U
Mounting position	Any
Guide	Recirculating ball bearing guide
Structural design	with ball screw drive
Motor type	Stepper motor Servo motor
Homing	Fixed stop block positive Fixed stop block, negative Reference switch
Spindle type	Ball screw drive
Symbol	00992069
Position sensing	For proximity sensor
Max. acceleration	5 m/s ²
Max. rotational speed	4000 rpm
Max. speed	0.133 m/s
Repetition accuracy	±0.015 mm
Duty cycle	100%
Corrosion resistance class (CRC)	0 - No corrosion stress
LABS (PWIS) conformity	VDMA24364 zone III
Suitability for the production of Li-ion batteries	Suitable for battery production with reduced Cu/Zn/Ni values (F1a)
Cleanroom suitability, measured according to ISO 14644-14	Class 9 according to ISO 14644-1
Noise level	45 dB(A)
Degree of protection	IP40
Ambient temperature	0 °C ... 50 °C
Impact energy in the end positions	5.0E-6 J
Note on the impact energy in the end positions	At maximum speed of the reference run of 0.01 m/s
Fixed bearing dynamic basic load rating	2810 N
Linear guide dynamic basic load rating	1310 N
Dynamic basic load rating, ball screw drive	1900 N
No-load torque at maximum travel speed	0.015 Nm
No-load torque at minimum travel speed	0.005 Nm

Feature	Value
Max. force Fy	669 N
Max. force Fz	669 N
Fy with theoretical service life of 100 km (from a guide perspective only)	1310 N
Fz with theoretical service life of 100 km (from a guide perspective only)	1310 N
Max. torque Mx	2 Nm
Max. torque My	2.1 Nm
Max. torque Mz	2.1 Nm
Mx with theoretical service life of 100 km (from a guide perspective only)	5 Nm
My with theoretical service life of 100 km (from a guide perspective only)	4 Nm
Mz with theoretical service life of 100 km (from a guide perspective only)	4 Nm
Max. radial force on actuator shaft	30 N
Max. feed force Fx	20 N
Guide value for payload, horizontal	2 kg
Guide value for payload, vertical	2 kg
Ball screw drive statistical basic load rating	2800 N
Linear guide statistical basic load rating	2440 N
Mass moment of inertia JH per meter of stroke	0.00529 kgcm ²
Mass moment of inertia JL per kg of payload	0.00101 kgcm ²
Mass moment of inertia JO	8.7E-4 kgcm ²
Feed constant	2 mm/U
Statistical fixed bearing load rating	1340 N
Reference service life	5000 km
Maintenance interval	Life-time lubrication
Moving mass at 0 mm stroke	83 g
Additional moving mass per 10 mm stroke	9 g
Product weight	223 g
Basic weight with 0 mm stroke	176 g
Additional weight per 10 mm stroke	19 g
Type of mounting	With internal thread With centering sleeve With accessories With cylindrical pin
Interface code, actuator	V20
Note on materials	RoHS-compliant
Slide carriage material	Roller bearing steel
Guide rail material	Roller bearing steel
Housing material	Wrought aluminum alloy, anodized
Material of yoke plate	Wrought aluminum alloy, anodized
Piston rod material	High-alloy stainless steel
Slide material	Wrought aluminum alloy, anodized
Ball screw nut material	Roller bearing steel
Spindle material	Roller bearing steel