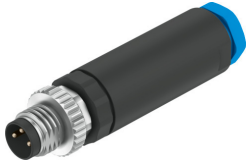


Plug NECB-S-M8G3-C2

Part number: 8162298

FESTO



 General operating condition

Data sheet

| Feature | Value |
|---|---|
| Conforms to standard | EN 61076-2-104 |
| Certification | c UL us - Listed (OL) |
| Certificate issuing authority | UL E474609 |
| Contact durability | 100 |
| Cable outlet | Straight |
| Product weight | 5 g |
| Application note | Only energy-limited circuits with a maximum current of 4 A at a max. open circuit voltage of 30 VDC are permitted to be used for supplying electrically actuated valves from Festo. |
| Electrical connection 1, function | Control side |
| Electrical connection 1, design | Round |
| Electrical connection 1, connection type | Plug |
| Electrical connection 1, connection technology | M8x1 A-coded as per EN 61076-2-104 |
| Electrical connection 1, number of pins/wires | 3 |
| Electrical connection 1, occupied pins/wires | 3 |
| Electrical connection 1, type of mounting | Screw-type lock with hexagon AF 9 and longitudinal knurl rotatable |
| Electrical connection 1, type of mounting | Compatible with rotatable/non-rotatable screw-type lock |
| Electrical connection for input 1, connection pattern | 00991155 |
| Electrical connection 2, function | Field device end |
| Electrical connection 2, connection type | Cable |
| Electrical connection 2, connection technology | Screw terminal |
| Electrical connection 2, number of pins/wires | 3 |
| Electrical connection 2, occupied pins/wires | 3 |
| DC operating voltage range | 0 V ... 60 V |
| Operating voltage range AC | 0 V ... 48 V |
| Current rating at 40° C | 4 A |
| Surge resistance | 1.5 kV |
| Protective earth connection | Not available |
| Cable fitting | 3/8-24 UNF-2A |
| Cable diameter | 2.1 mm ... 5 mm |
| Connection cross section | 0.14 mm ² ... 0.75 mm ² |
| Information on port cross section | 0.1 mm ² with wire end sleeve |
| Degree of protection | IP65 IP67 |
| Note on degree of protection | In mounted state |
| Ambient temperature | -25 °C ... 90 °C |

| Feature | Value |
|----------------------------------|--------------------------------------|
| Note on ambient temperature | Note derating |
| LABS (PWIS) conformity | VDMA24364-B2-L |
| Note on materials | RoHS-compliant |
| Contamination level | 3 |
| Corrosion resistance class (CRC) | 1 - Low corrosion stress |
| Housing material | PA66-GF30 |
| Housing colour | Black |
| Material of screw-type lock | Die-cast zinc, nickel-plated |
| Material of screws | Steel, nickel-plated |
| Seals material | FPM |
| Material of pin contacts | Brass, nickel-plated and gold-plated |