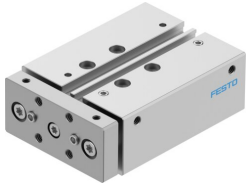


Guided drive DFM-16-25-B-PPV-A-GF

Part number: 8162430

FESTO



 General operating condition

Data sheet

Feature	Value
Stroke	25 mm
Piston diameter	16 mm
Drive unit operating mode	Yoke
Cushioning	Pneumatic cushioning, adjustable at both ends
Mounting position	Any
Guide	Sliding guide
Structural design	Guide
Position sensing	For proximity sensor
Operating pressure	0.2 MPa ... 1 MPa
Operating pressure	2 bar ... 10 bar
Mode of operation	Double-acting
Operating medium	Compressed air as per ISO 8573-1:2010 [7:4:4]
Information on operating and pilot media	Operation with oil lubrication possible (required for further use)
Corrosion resistance class (CRC)	2 - Moderate corrosion stress
LABS (PWIS) conformity	VDMA24364-B1/B2-L
Cleanroom suitability, measured according to ISO 14644-14	Class 6 according to ISO 14644-1
Ambient temperature	-20 °C ... 80 °C
Impact energy in the end positions	0.15 J
Theoretical force at 6 bar, retracting	104 N
Theoretical force at 6 bar, advancing	121 N
Alternative connections	See product drawing
Pneumatic connection	M5
Note on materials	RoHS-compliant
Cover material	Wrought aluminum alloy
Seals material	NBR
Housing material	Wrought aluminum alloy
Piston rod material	High-alloy stainless steel