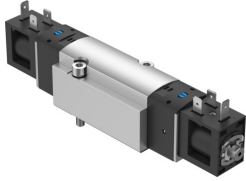


Solenoid valve VSVA-BK-B52-D-D1-1B2

Part number: 8166592

FESTO



[PDF General operating condition](#)

Data sheet

Feature	Value
Valve function	5/2, bistable
Actuation type	Electrical
Width	38 mm
Valve size	42 mm
Normal nominal flow rate (normalized to DIN 1343)	1200 l/min
Pneumatic working port	Sub-base, size 1 according to ISO 5599-1
Operating voltage	24V DC
Operating pressure	0.3 MPa ... 0.8 MPa
Operating pressure	3 bar ... 8 bar
Structural design	Piston slide with sealing ring
Degree of protection	IP65 With plug socket as per IEC 60529
Nominal width	6.3 mm
Width dimension	43 mm
Exhaust air function	With flow control option
Sealing principle	Soft
Mounting position	Any
Conforms to standard	ISO 5599-1
Manual override	Detenting Non-detenting
ISO code	155
Type of control	Pilot-controlled
Pilot air supply port	Internal
Flow direction	Non-reversible
Symbol	00991005
Lap	Underlap
Signal status display	With accessories
b-value	0.26
C value	5.91 l/sbar
Flow rate of pneumatic valve	1341 l/min
Flow rate of pneumatic valve on individual sub-base	1341 l/min
Optimized flow rate of pneumatic valve pneumatically concatenated flow	1313 l/min
Changeover time	10.5 ms
Duty cycle	100%
Max. positive test pulse with 0 signal	2500 µs

Feature	Value
Max. negative test pulse on 1 signal	1100 µs
Nominal operating voltage DC	24 V
Coil characteristics	24 V DC: 3.3 W
Permissible voltage fluctuations	+/- 10 %
Operating medium	Compressed air as per ISO 8573-1:2010 [7:4:4]
Information on operating and pilot media	Operation with oil lubrication possible (required for further use)
Vibration resistance	Transport application test with severity level 2 as per FN 942017-4 and EN 60068-2-6
Shock resistance	Shock test with severity level 2 as per FN 942017-5 and EN 60068-2-27
Corrosion resistance class (CRC)	1 - Low corrosion stress
LABS (PWIS) conformity	VDMA24364 zone III
Temperature of medium	-5 °C ... 50 °C
Pilot medium	Compressed air as per ISO 8573-1:2010 [7:4:4]
Ambient temperature	-5 °C ... 50 °C
Max. tightening torque for valve mounting	5 Nm
Product weight	400 g
Electrical connection	Form B As per industrial standard (11 mm)
Type of mounting	On sub-base
Venting hole connection	Not ducted
Pneumatic connection 1	Sub-base, size 1 as per ISO 5599-1
Pneumatic connection 2	Sub-base, size 1 as per ISO 5599-1
Pneumatic connection 3	Sub-base, size 1 as per ISO 5599-1
Pneumatic connection 4	Sub-base, size 1 as per ISO 5599-1
Pneumatic connection 5	Sub-base, size 1 as per ISO 5599-1
Note on materials	RoHS-compliant
Seals material	HNBR NBR
Housing material	Wrought aluminum alloy
Piston slide material	Wrought aluminum alloy
Material of screws	Steel, galvanized