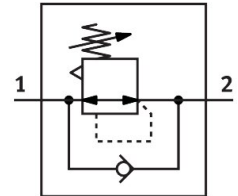


Pressure regulator MS2-LR-M5-D6-A8-F1A-B

Part number: 8167260

FESTO



 General operating condition

Data sheet

Feature	Value
Size	2
Series	MS
Actuator lock	Rotary knob with detent
Mounting position	Any
Structural design	Directly controlled diaphragm regulator
Controller function	Outlet pressure constant With secondary exhausting With return flow function
Symbol	00991559
Pressure gauge	G1/8 prepared
Operating pressure	0.1 MPa ... 1 MPa
Operating pressure	1 bar ... 10 bar
Pressure regulation range	0.5 bar ... 7 bar
Max. pressure hysteresis	0.025 MPa
Max. pressure hysteresis	0.25 bar
Max. pressure hysteresis	3.625 psi
Normal nominal flow rate (normalized to DIN 1343)	170 l/min
Operating medium	Compressed air as per ISO 8573-1:2010 [7:4:4] Inert gas
Corrosion resistance class (CRC)	1 - Low corrosion stress
LABS (PWIS) conformity	VDMA24364-B1/B2-L
Suitability for the production of Li-ion batteries	Suitable for battery production with reduced Cu/Zn/Ni values (F1a)
Cleanroom suitability, measured according to ISO 14644-14	Class 6 according to ISO 14644-1
Storage temperature	-5 °C ... 50 °C
Temperature of medium	-5 °C ... 50 °C
Ambient temperature	-5 °C ... 50 °C
Product weight	30.8 g
Type of mounting	With accessories
Pneumatic connection 1	M5
Pneumatic connection 2	M5
Note on materials	RoHS-compliant
Lower cover material	PA
Seals material	NBR
Rotary knob material	POM

Feature	Value
Material of spring	High-alloy steel
Housing material	PA-reinforced
Diaphragm material	NBR
Valve tappet material	Wrought aluminum alloy NBR