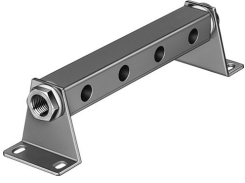


# Common supply manifold PAL-1/8-4

Part number: 8603

FESTO



 [General operating condition](#)

## Data sheet

| Feature                     | Value                 |
|-----------------------------|-----------------------|
| Mounting position           | Any                   |
| Max. no. of valve positions | 4                     |
| LABS (PWIS) conformity      | VDMA24364-B1/B2-L     |
| Product weight              | 190 g                 |
| Type of mounting            | With mounting bracket |
| Pneumatic connection 1      | G1/4                  |
| Note on materials           | RoHS-compliant        |
| Material of sub-base        | Aluminum<br>Anodized  |