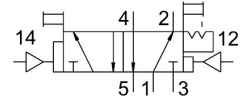


Pneumatic valve JDH-5-1/8

Part number: 8824

FESTO



 [General operating condition](#)

Data sheet

Feature	Value
Valve function	5/2, bistable, dominant
Actuation type	Pneumatic
Width	26 mm
Normal nominal flow rate (normalized to DIN 1343)	600 l/min
Pneumatic working port	G1/8
Operating pressure	0 MPa ... 1 MPa
Operating pressure	0 bar ... 10 bar
Structural design	Plate seat
Nominal width	5 mm
Width dimension	27 mm
Exhaust air function	With flow control option
Sealing principle	Soft
Mounting position	Any
Type of control	Direct
Pilot air supply port	External
Flow direction	Non-reversible
Symbol	00995764
Lap	Underlap
Pilot pressure MPa	0.23 MPa ... 1 MPa
Pilot pressure	2.3 bar ... 10 bar
Max. switching frequency	12 Hz
Switching time off	16 ms
On switching time	9 ms
Changeover time	7 ms
Operating medium	Compressed air as per ISO 8573-1:2010 [7:4:4]
Information on operating and pilot media	Operation with oil lubrication possible (required for further use)
Corrosion resistance class (CRC)	1 - Low corrosion stress
LABS (PWIS) conformity	VDMA24364-B1/B2-L
Storage temperature	-20 °C ... 60 °C
Temperature of medium	-10 °C ... 60 °C
Ambient temperature	-10 °C ... 60 °C
Product weight	330 g
Type of mounting	On terminal strip With through-hole
Pilot air port 12	G1/8
Pilot air port 14	G1/8

Feature	Value
Pneumatic connection 1	G1/8
Pneumatic connection 2	G1/8
Pneumatic connection 3	G1/8
Pneumatic connection 4	G1/8
Pneumatic connection 5	G1/8
Note on materials	RoHS-compliant
Seals material	NBR TPE-U(PU)
Housing material	Die-cast aluminum