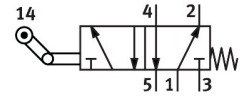


# Toggle lever valve with idle return L-5-1/4-B

Part number: 8993

FESTO



 [General operating condition](#)

## Data sheet

Feature	Value
Valve function	5/2, monostable
Actuation type	Mechanical
Normal nominal flow rate (normalized to DIN 1343)	550 l/min
Pneumatic working port	G1/4
Operating pressure	-0.95 bar ... 10 bar
Structural design	Plate seat
Nominal width	7 mm
Type of control	Direct
Symbol	00991718
LABS (PWIS) conformity	VDMA24364-B1/B2-L
Ambient temperature	-10 °C ... 60 °C
Actuating force	71.5 N
Product weight	360 g
Type of mounting	With through-hole
Pneumatic connection 1	G1/4
Pneumatic connection 2	G1/4
Pneumatic connection 3	G1/4
Pneumatic connection 4	G1/4
Pneumatic connection 5	G1/4
Seals material	NBR
Housing material	Die-cast aluminum