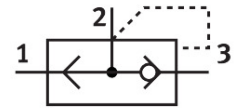


Quick exhaust valve SE-1/2-B

Part number: 9688

FESTO



 General operating condition

Data sheet

| Feature | Value |
|---|--|
| Valve function | Quick exhaust |
| Pneumatic connection 1 | G1/2 |
| Pneumatic connection 2 | G1/2 |
| Type of mounting | Screw-in |
| Standard nominal flow rate exhaust air 6→5 bar | 6480 l/min |
| Standard nominal flow rate pressurization 6→5 bar | 4560 l/min |
| Operating pressure | 0.3 bar ... 10 bar |
| Ambient temperature | -20 °C ... 75 °C |
| Housing material | Die-cast aluminum |
| Operating medium | Compressed air as per ISO 8573-1:2010 [7:-:-] |
| Nominal width | 15 mm |
| Mounting position | Any |
| Symbol | 00991459 |
| Information on operating and pilot media | Operation with oil lubrication possible (required for further use) |
| LABS (PWIS) conformity | VDMA24364-B1/B2-L |
| Temperature of medium | -20 °C ... 75 °C |
| Product weight | 200 g |
| Pneumatic connection 3 | G1/2 |
| Seals material | NBR |