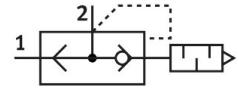


# Quick exhaust valve SEU-1/2-NPT

Part number: 9801

FESTO



[PDF](#) General operating condition

## Data sheet

Feature	Value
Valve function	Quick exhaust
Selection of additional function	with muffler
Pneumatic connection 1	1/2 NPT
Pneumatic connection 2	1/2 NPT
Type of mounting	Screw-in
Standard nominal flow rate exhaust air 6→5 bar	4020 l/min
Standard flow rate exhaust 6→0 bar	6500 l/min
Standard nominal flow rate pressurization 6→5 bar	4560 l/min
Operating pressure	0.3 bar ... 10 bar
Ambient temperature	-20 °C ... 75 °C
Operating medium	Compressed air as per ISO 8573-1:2010 [7:-:-]
Nominal width	15 mm
Symbol	00991460
Information on operating and pilot media	Operation with oil lubrication possible (required for further use)
LABS (PWIS) conformity	VDMA24364-B1/B2-L
Temperature of medium	-20 °C ... 75 °C
Noise level	86 dB(A)
Note on materials	RoHS compliant