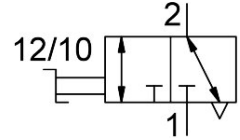


# Shut-off valve HE-3-1/4-QS-5/16-U

Part number: 190869

FESTO



[PDF General operating condition](#)

## Datasheet product reliability

The information in this "Product reliability data sheet" is based on products being used as intended. This includes complying with all specifications in data sheets, catalogues, user documentation and the general operating conditions. The user alone is responsible for determining whether a product is suitable for a particular application.

Feature	Value
Relevant basic safety principles <sup>1)</sup>	Yes
Common Cause Failure (CCF) measures <sup>2)</sup>	Observe compressed air quality Maintain operating voltage limits Comply with maximum vibration and shock loads Comply with ambient temperature and temperature of medium Safely keep operating pressure within the limits of the technical specifications
Relevant well-tried safety principles <sup>3)</sup>	Yes
Well-tried component <sup>4)</sup>	Yes
Design characteristics	Piston spool valve
Vibration resistance	Transport application test with severity level 2 in accordance with FN942017-4 and EN 60068-2-6
Shock resistance	Shock test with severity level 2 in accordance with FN 942017-5 and EN 60068-2-27

- 1) The product-relevant basic safety principles are fulfilled according to the ISO 13849-2.
- 2) CCF measures have to be verified for the precise application. Therefore, the list with measures is not meant to be exhaustive.
- 3) The product-relevant well-tried safety principles are fulfilled according to the ISO 13849-2.
- 4) The product is a well-tried product for a safety-related application according to ISO 13849-1. The relevant basic and well- tried safety principles according ISO 13849-2 for this product are fulfilled. The suitability of the product for a precise application must be verified by the user.