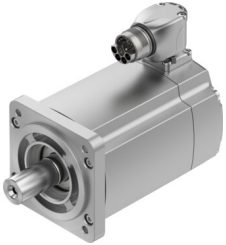


# Servo motor EMMT-AS-80-S-LS-RS

Part number: 5255425

FESTO



 [General operating condition](#)

## Datasheet product reliability

The information in this "Product reliability data sheet" is based on products being used as intended. This includes complying with all specifications in data sheets, catalogues, user documentation and the general operating conditions. The user alone is responsible for determining whether a product is suitable for a particular application.

Feature	Value
Certificate issuing authority	UL E342973
Mean time to failure (MTTF), subcomponent <sup>1)</sup>	190 years, rotor position sensor
Vibration resistance	Transport application test with severity level 2 in accordance with FN942017-4 and EN 60068-2-6
Shock resistance	Shock test with severity level 2 in accordance with FN 942017-5 and EN 60068-2-27
CE mark (see declaration of conformity)	To EU EMC Directive To EU RoHS Directive To EU Low Voltage Directive

1) The ascertainment of the MTTF value is based on the IEC 61709 "Electric components - Reliability - Reference conditions for failure rates and stress models for conversion" respectively on the SN 29500.