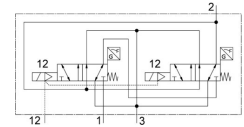
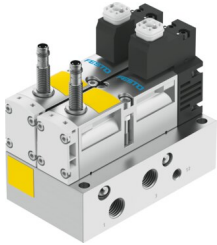


Control block VOFA-L26-T32C-MZ-G14-1C1-APP

Part number: 8162034



[PDF General operating condition](#)

Datasheet product reliability

The information in this "Product reliability data sheet" is based on products being used as intended. This includes complying with all specifications in data sheets, catalogues, user documentation and the general operating conditions. The user alone is responsible for determining whether a product is suitable for a particular application.

Feature	Value
Mean number of annual operations nop (assumed) ¹⁾	3000000
Probability of Dangerous Failure per Hour (PFHd) ²⁾	$3.92 \cdot 10^{-8}$
Common Cause Failure (CCF) measures ³⁾	Observe compressed air quality Comply with maximum vibration and shock loads Comply with ambient temperature and temperature of medium Comply with pilot pressure with external pilot air supply within the limits of the technical specifications
Service-life value B ₁₀ ⁴⁾	10 Mio cycles
Duration of use T _m	20 Year
Note on forced dynamization	Switching frequency min. 1/week
Design characteristics	Piloted piston spool
Lap	Overlap
Vibration resistance	Transport application test with severity level 2 in accordance with FN942017-4 and EN 60068-2-6
Shock resistance	Shock test with severity level 2 in accordance with FN 942017-5 and EN 60068-2-27
Release current	< 2 mA
Max. positive test pulse with 0 signal	1000 µs
Max. negative test pulse with 1 signal	800 µs
Max. magnetic interference field	60 mT
CE mark (see declaration of conformity)	To EU EMC Directive To EU Machinery Directive
Safety function ⁵⁾	Exhausting Protection against manipulation, prevention of unexpected start-up
Performance Level (PL) ⁶⁾	Exhausting/up to Category 4, Performance Level e Protection against manipulation, prevention of unexpected start-up/up to Category 4, Performance Level e

- 1) The probability of failure is based on this mean number of annual operations (nop).
- 2) For components affected by wear this value will be reached, if for the precise application the mean number of annual operations (nop) is equal or lower than the assumed annual operations of this product. The assumed mean number of annual operations is stated in this datasheet.
- 3) CCF measures have to be verified for the precise application. Therefore, the list with measures is not meant to be exhaustive.
- 4) The ascertainment of characteristic service life values is based on the ISO 19973 "Pneumatic fluid power - Assessment of component reliability by testing".
- 5) Further measures can be necessary for realization of the mentioned safety function. For these measures refer to the relevant documentation.
- 6) Further measures can be necessary to fulfil the stated Performance Level (PL). For these measures refer to the relevant documentation.