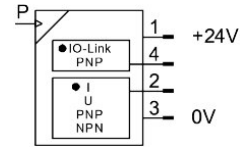
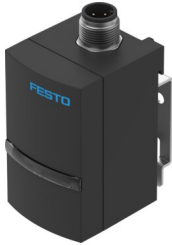



Pressure sensor SPAU-V1R-W-Q6D-LK-A-M12U

Part number: 8187488

FESTO



 [General operating condition](#)

Datasheet product reliability

The information in this "Product reliability data sheet" is based on products being used as intended. This includes complying with all specifications in data sheets, catalogues, user documentation and the general operating conditions. The user alone is responsible for determining whether a product is suitable for a particular application.

| Feature | Value |
|---|---|
| Service-life value B_{10} ¹⁾ | 25 Mio cycles |
| Mean time to failure (MTTF) ²⁾ | 122,8 Year |
| CE mark (see declaration of conformity) | To EU EMC Directive To EU RoHS Directive |

- 1) The ascertainment of characteristic service life values is based on the ISO 19973 "Pneumatic fluid power - Assessment of component reliability by testing".
- 2) The ascertainment of the MTTF value is based on the IEC 61709 "Electric components - Reliability - Reference conditions for failure rates and stress models for conversion" respectively on the SN 29500.