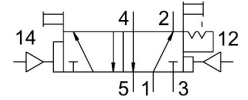


Pneumatic valve JDH-5-1/8

Part number: 8824

FESTO



 [General operating condition](#)

Datasheet product reliability

The information in this "Product reliability data sheet" is based on products being used as intended. This includes complying with all specifications in data sheets, catalogues, user documentation and the general operating conditions. The user alone is responsible for determining whether a product is suitable for a particular application.

Feature	Value
Service-life value B_{10} ¹⁾	10 Mio cycles
Well-tried component ²⁾	Yes
Max. switching frequency	12 Hz
Design characteristics	Remains in switching position on signal switch-off (bistable valve)
Lap	Underlap

- 1) The ascertainment of characteristic service life values is based on the ISO 19973 "Pneumatic fluid power - Assessment of component reliability by testing".
- 2) The product is a well-tried product for a safety-related application according to ISO 13849-1. The relevant basic and well- tried safety principles according ISO 13849-2 for this product are fulfilled. The suitability of the product for a precise application must be verified by the user.