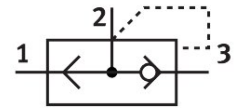


Quick exhaust valve SE-1/8-B

Part number: 9685



 General operating condition

Datasheet product reliability

The information in this "Product reliability data sheet" is based on products being used as intended. This includes complying with all specifications in data sheets, catalogues, user documentation and the general operating conditions. The user alone is responsible for determining whether a product is suitable for a particular application.

Feature	Value
Common Cause Failure (CCF) measures ¹⁾	Observe compressed air quality Comply with ambient temperature and temperature of medium
Service-life value B ₁₀ ²⁾	10 Mio cycles
Fault exclusion	Spontaneous change in initial switching position (without input signal). For check valves only with applied pressure at port 2. Bursting of the valve housing: externally directed failure of the material structure with a sudden release of the medium and associated pressure drop (according to ISO 5598, 3.2.85).
Well-tried component ³⁾	Yes

- 1) CCF measures have to be verified for the precise application. Therefore, the list with measures is not meant to be exhaustive.
- 2) The ascertainment of characteristic service life values is based on the ISO 19973 "Pneumatic fluid power - Assessment of component reliability by testing".
- 3) The product is a well-tried product for a safety-related application according to ISO 13849-1. The relevant basic and well- tried safety principles according ISO 13849-2 for this product are fulfilled. The suitability of the product for a precise application must be verified by the user.